

PLEASE CHECK WWW.MOLEX.COM FOR LATEST PART INFORMATION

Part Number: [0003062157](#)
Status: **Active**
Overview: [standard_062](#)
Description: 1.57mm (.062") Diameter Standard .062 Pin and Socket Receptacle Housing, 15 Circuits, With Standard Mounting Ears, Positive Lock

Documents:

3D Model	Product Specification PS-02-06 (PDF)
Drawing (PDF)	RoHS Certificate of Compliance (PDF)
Packaging Specification (PDF)	

Agency Certification

CSA	LR19980
TUV	R72081037
UL	E29179

General

Product Family	Crimp Housings
Series	1625
Comments	Polarized to Mating Part
Overview	standard_062
Product Name	Standard .062"

Physical

Breakaway	No
Circuits (maximum)	15
Circuits Detail	3x5
Color - Resin	Natural
Flammability	94V-2
Gender	Receptacle
Glow-Wire Compliant	No
Keying to Mating Part	None
Lock to Mating Part	Yes
Material - Resin	Nylon
Number of Rows	3
Packaging Type	Bag
Panel Mount	Yes
Pitch - Mating Interface (in)	0.145 In
Pitch - Mating Interface (mm)	3.68 mm
Pitch - Term. Interface (in)	0.145 In
Pitch - Term. Interface (mm)	3.96 mm
Polarized to Mating Part	Yes
Ports	1
Stackable	No
Temperature Range - Operating	-40°C to +105°C

Electrical

Current - Maximum per Contact	4A
-------------------------------	----

Material Info

Old Part Number	1625-15P7
-----------------	-----------

Reference - Drawing Numbers

Packaging Specification	PK-1625-001
Product Specification	PS-02-06
Sales Drawing	SD-1625-15*7*

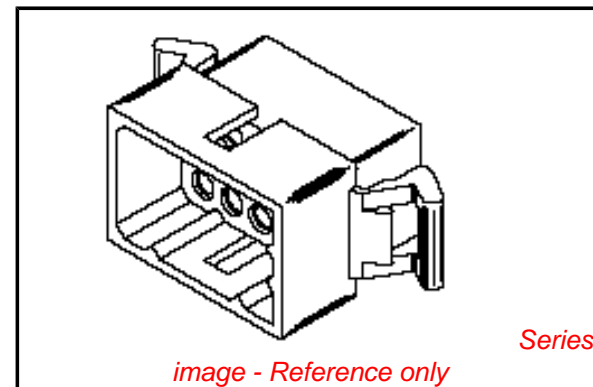


image - Reference only

EU RoHS

ELV and RoHS Compliant
REACH SVHC Contains SVHC: No
Halogen-Free Status
Not Reviewed

China RoHS



Need more information on product environmental compliance?

Email productcompliance@molex.com
 For a multiple part number RoHS Certificate of Compliance, [click here](#)

Please visit the [Contact Us](#) section for any non-product compliance questions.

Search Parts in this Series

[1625Series](#)

Mates With

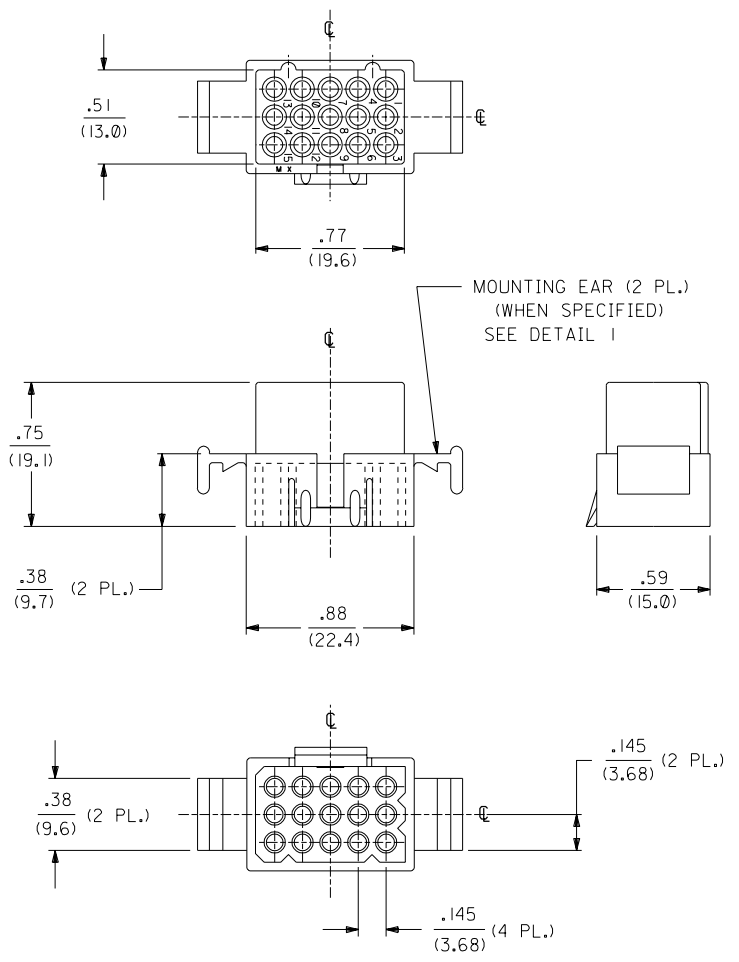
[1625 Plug](#)

Use With

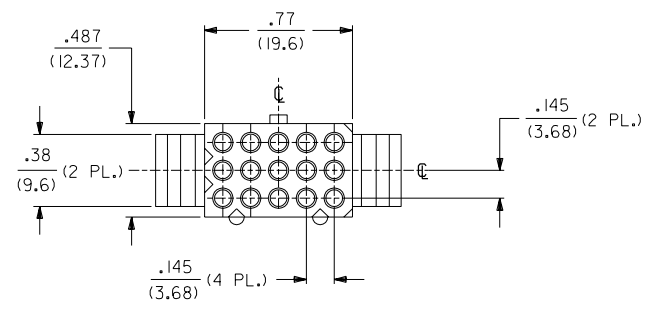
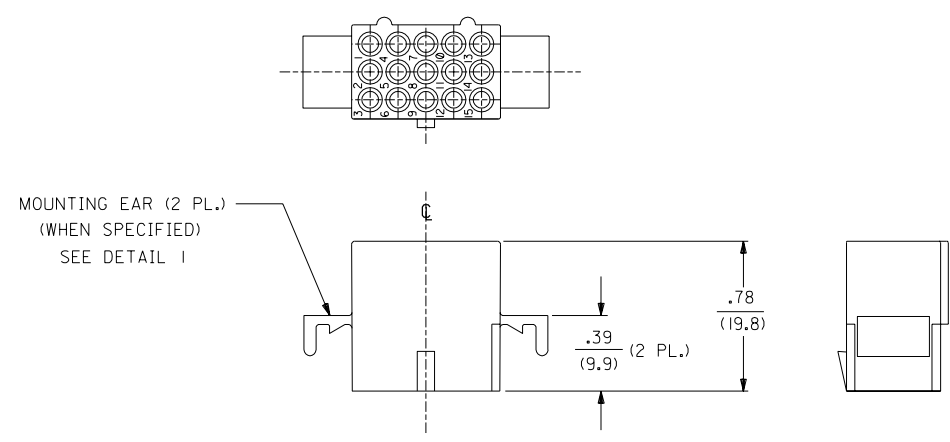
Female Crimp Terminals [1561Link:4559](#), [4529](#), [2190](#), [2189](#), [1787](#), [1855](#). Male Crimp Terminals [1560](#), [1786](#), [1854](#), [1778](#). Male PC Tail Terminals. [1779](#) Female PC Tail Terminals

This document was generated on 06/07/2010

PLEASE CHECK WWW.MOLEX.COM FOR LATEST PART INFORMATION



PLUG HOUSING



RECEPTACLE HOUSING

CHART AND NOTES ON SHEET 2

G	OBSOLETE P/N UCP2003-1545 AELHAG, 03/01/16
F	REVISED PER ECR U1 0237 GK 1/8/91 RW
E	REDRAWN ON CAD ECR U0 0854 GK 11/1/90 RW

DIMENSIONS SHOWN (METRIC) INCH		UNLESS OTHERWISE SPECIFIED TOLERANCES: ANGULAR ± .08°	
3 PLAGE	± .010	---	---
2 PLAGE	± .014	± 0.25	---
1 PLAGE	---	± 0.36	---
DRAFT WHERE APPLICABLE MUST REMAIN WITHIN DIMENSIONS			
DRWG. BY: GK	CHK'D. BY: RW	SCALE: 2:1	DATE: 11/1/90
APP'D. BY: GWF	FILE NAME: S16251571.DGN	THIS DRAWING CONTAINS INFORMATION THAT IS PROPRIETARY TO MOLEX INC. AND SHOULD NOT BE USED WITHOUT WRITTEN PERMISSION	SIZE: CP C

TITLE		REVISE ONLY ON CAD SYSTEM	
.062/(1.57) HOUSING, PLUG & RECEPTACLE, 15 CKT., .145/(3.68) CTRS., POSITIVE LOCK			
MOLEX INCORPORATED		SHEET NO. 1 of 2	
LITSE,ILL. 60532		U.S.A. 11/1/90	
PART NO.		DRWG. NO.	
SEE CHART		SD-1625-15*7*	

PLUG		RECEPTACLE		
PART NO.	ENG. NO.	PART NO.	ENG. NO.	
03-06-2158	1625-15P7I	03-06-1158	1625-15R7I	
03-06-2157	1625-15P7	03-06-1157	1625-15R7	
PRELIMINARY	1625-15P7BK I	PRELIMINARY	1625-15R7BK I	
03-06-7157	1625-15P7BK	03-06-6157	1625-15R7BK	OBSOLETE

LEGEND:

1625-15*7***

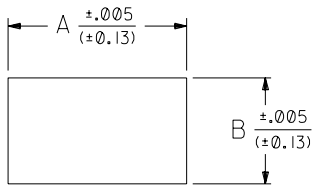
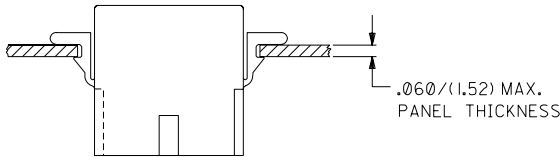
CIRCUIT SIZE

P = PLUG
R = RECEPTACLE

POSITIVE LOCK VERSION

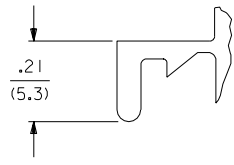
MOUNTING OPTION:
BLANK = WITH STANDARD EARS
I = WITHOUT EARS

COLOR:
BLANK = NATURAL COLOR
AM = AMBER BK = BLACK BU = BLUE
BN = BROWN GY = GRAY GN = GREEN
OR = ORANGE RD = RED YW = YELLOW



RECOMMENDED HOLE PATTERN

RECEP.	.934 (23.72)	.563 (14.30)
PLUG	1.042 (26.47)	.614 (15.60)
PART	DIM. A	DIM. B



DETAIL I
STANDARD MOUNTING EAR
SCALE 4:1

- NOTES:**
1. MATERIAL: NYLON TYPE 6/6, 94V-2.
 2. THIS PART COMPLIES WITH MOLEX PRODUCT SPEC. 02-06.
 3. THIS HOUSING FOR USE WITH .062/(1.57) DIA. TERMINALS.

DIMENSIONS SHOWN (METRIC) INCH		UNLESS OTHERWISE SPECIFIED TOLERANCES: ANGULAR \pm DMS		REVISE ONLY ON CAD SYSTEM	
INCH		METRIC		TITLE	
3 PLACE \pm	.010	---		.062/(1.57) HOUSING, PLUG & RECEPTACLE, 15 CKT., .145/(3.68) CTRS., POSITIVE LOCK	
2 PLACE \pm	.014	\pm 0.25		FROM: MOLEX INCORPORATED	SHEET NO. 2
1 PLACE ---	\pm 0.36		DATE 11 / 1 / 90		
DRAFT WHERE APPLICABLE MUST REMAIN WITHIN DIMENSIONS				PART NO. SD-1625-15*7*	
DRWG. BY: GKC	CHK'D. BY: RW	SEE CHART		DRWG. NO. SD-1625-15*7*	
APP'D. BY: GWF	SCALE: 2 : 1	FILE NAME: S16251572.DGN		DIV. CP	
LTR. REVISIONS		LTR. REVISIONS		THIS DRAWING CONTAINS INFORMATION THAT IS PROPRIETARY TO MOLEX INC. AND SHOULD NOT BE USED WITHOUT WRITTEN PERMISSION.	